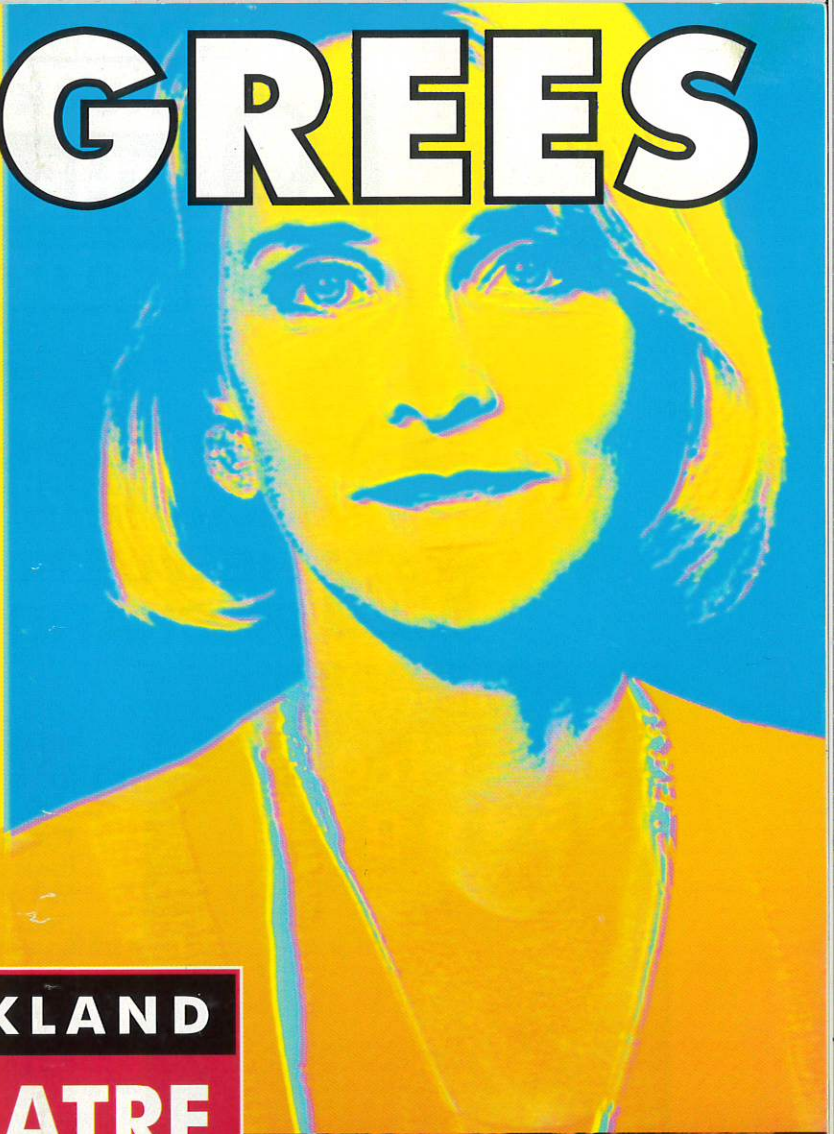
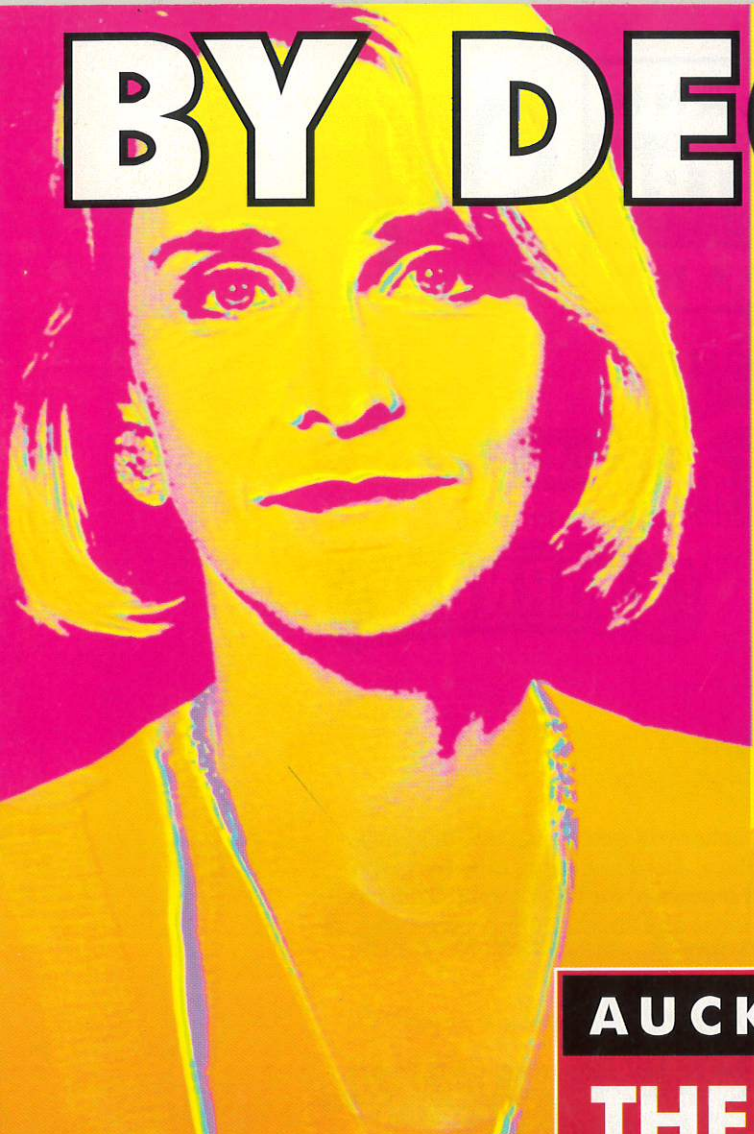


BY DEGREES



AUCKLAND
THEATRE
COMPANY

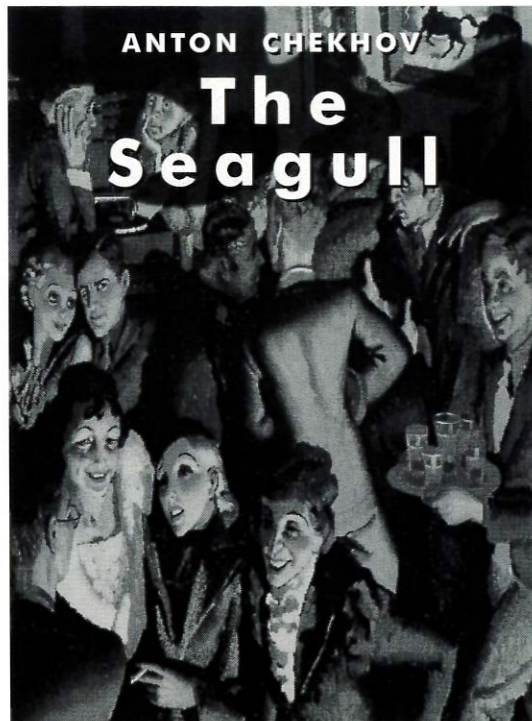


R o g e r H a l l

19 AUCKLAND THEATRE COMPANY 94

presents
The Seagull

In Association with Hewlett Packard & Smirnoff



THE SEAGULL
by Anton Chekhov

Widely acknowledged as one of Chekhov's finest plays. Award-winning director Colin McColl renowned for his interpretations of A Dolls House and Hedda Gabler, now turns his talent to this masterpiece.

Directed by Colin McColl

Cast includes: Bridget Armstrong, Craig Parker, Sophia Hawthorne, Alison Bruce, Ross Duncan, Geoff Snell, Martyn Sanderson

At the Herald Theatre from
August 25
BOOKINGS NOW OPEN AT BASS

*Aotea
Centre*

BECOME AN ATC SUBSCRIBER

If you have enjoyed tonight's performance and other productions by Auckland Theatre Company the stage is now set for you to become a valued subscriber.

Advantages include convenient no fuss priority bookings, ensuring the best available seats, special incentives and discounts for you and your friends. We take the hassle out of booking leaving you to enjoy a great night out at the theatre.

Becoming a subscriber is both free and obligation free!

PLEASE: Fill in the enclosed subscription form, or drop us a line to:
Auckland Theatre Company, Freepost 4437, PO Box 1312 Shortland St. Auckland.
Including your name, address and phone numbers.

Becoming a subscriber to Auckland Theatre Company ensures our future.

With Thanks.



presents

By Degrees

Message from the sponsor

Welcome to a wonderful evening's entertainment as Smokefree presents "By Degrees".

The Health Sponsorship Council, promoting the Smokefree health brand, is proud to be associated with the Auckland Theatre Company during its run of this fabulous Roger Hall play.

No doubt you will be expecting many things from "By Degrees". You won't be disappointed! Its a great play; hugely entertaining, well written and with a very talented cast and director.

Without giving too much away the plot fits well with the Smokefree message. It offers fun and enjoyment, and also deals with issues such as taking responsibility for your own life, and achieving positive results by working for them.

We like that!

Tony Steel
Chairman

**AUCKLAND
THEATRE
COMPANY**

On behalf of the Auckland Theatre Company, it is my great pleasure to welcome you to *By Degrees*, the third play of our 1994 International Season.

Roger Hall needs no introduction to a New Zealand theatre-going audience. *By Degrees* is his latest work and contains the "Hall" mark of wry and insightful comedy, add to this a wistful subtext, and you have a work as engrossing and moving, as it is humorous.

This production could be subtitled "Roger's Girls". The Director, Designer, Production Manager, Stage Manager, Lighting Designer, Publicist, Wardrobe Supervisor, and of course, the cast are all women.

We welcome to Auckland Alison Quigan, Artistic Director of Centrepoint Theatre in Palmerston North. Alison trained at Theatre Corporate, where coincidentally one of her tutors was Ilona Rodgers. Ilona now heads a wonderful cast under Alison's direction, including Wellington's Judie Douglass and a welcome return by Auckland's Judith Gibson. One of the aims of this company is to introduce new talent to the professional stage and we take great pleasure in welcoming Rachel House, who completes a distinctive and exciting line-up.

We are now three quarters of the way through our 1994 season and planning for 1995 is already underway. We invite you to join our ever-expanding subscriber base. Information on how to do this is contained in this programme.

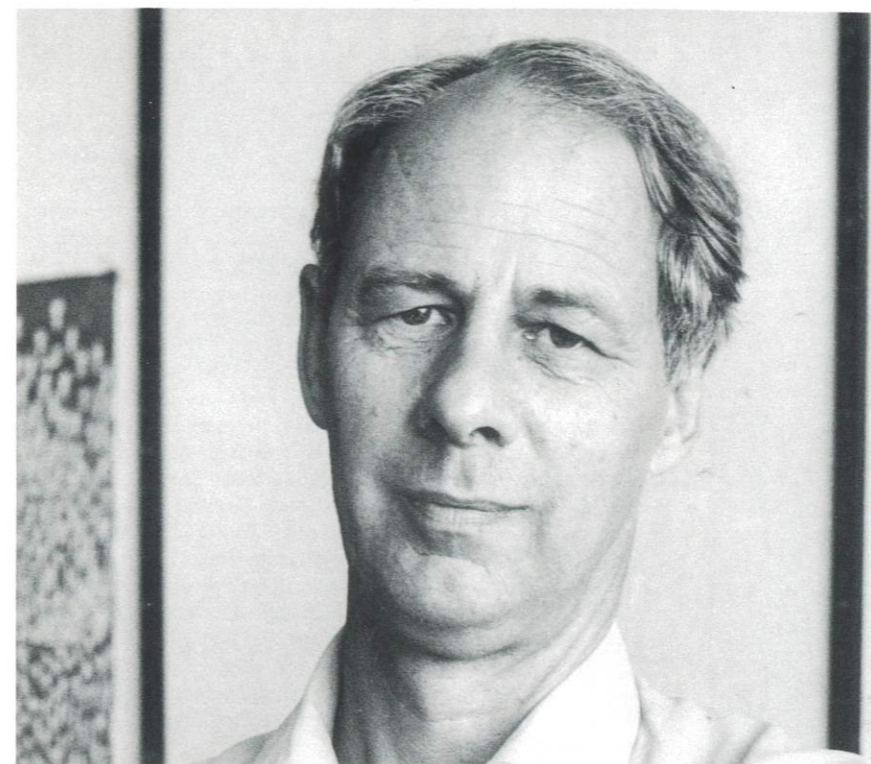
We trust you enjoy tonight's performance, and look forward to seeing you again at The Herald Theatre for Chekhov's *The Seagull*, directed by Colin McColl, opening on August 25.

Thank you for your custom, and best wishes from us all at the Auckland Theatre Company.



Simon Prast

Artistic Co-ordinator



Roger Hall *The Playwright*

Roger Hall, born in 1939, began his writing career with sketches for Teachers' College and university revues, theatre and television. He has written many sketches for New Zealand television series, *Pukemanu* and *Buck House*, and four television plays. In 1975 Roger was awarded an Arts Council grant, travelled to Britain and USA and wrote *Glide Time* on his return which led to a long-running television series. His plays, *Prisoners of Mother England*, *Fifty/Fifty*, *The Share Club*, *After the Crash* and *Conjugal Rites*. He has written traditional pantomimes including *Cinderella* and with Philip Norman and A.K. Grant wrote the musicals *Footrot Flats* and *Love off the Shelf*. In 1987 he was awarded the QSO and in the same year also received the Turnsovsky Award for Outstanding Contribution to the Arts.

THE PLAY

There were various inspirations that contributed to the writing of *By Degrees*. For many years in my playwriting class, I usually had a couple of 'mature women' students (I don't like the term, but no one has come up with a better one), and I was always impressed by their eagerness and motivation. My wife, Dianne, took a paper in Anthropology. Several years later she graduated with an MA. I sensed that mature women students were a special breed, eager, enthusiastic,

highly motivated. But I knew, too, that often it was a lot harder for them than for the younger students. The women had children to cope with, husbands who were not always supportive, financial difficulties, and the daily frustration of trying to find parking space in the middle of the day. But their drive and determination got them through. As with many of my plays, the idea was a dormant embryo for a long time. At last I thought the time had come. I described the idea to Fergus

Dick in the drama department of Radio New Zealand and he enthusiastically supported the idea and commissioned six half-hour scripts. I talked to a lot of mature women at university, learned a lot from Dianne's friends, sent out questionnaires and discussed them afterwards, and built up a lot of information to add what I already knew and sensed.

What was to be different about the scripts was that there were to be four women who spoke only monologues. None of them spoke a word of to any of the others! In theory dull stuff, but (if the many letters I got after the broadcast are to be believed), it turned out to be riveting. This was in 1992, and during that year I decided to adapt the work for the stage. Again, the 'problem' was whether to retain it as a monologue only. (Twenty years or so ago I had seen Kennedy's Children which had six characters speaking only in monologue form, so I knew it could work). I was supremely confident until about a week before the opening night, when I lay awake thinking it would be a disaster. But Campbell Thomas' production at the Fortune proved to be a great success. The productions at Christchurch and Wellington both had to be extended, and in Dunedin it was brought back for a second season. Obviously I'm pleased for my own sake at the wonderful response, but more importantly because it meant a lot to so many people. The play is meant to be my tribute to mature women students: despite the government and the Todd Report may they continue to attend University in big numbers.



Alison Quigan *Director*

Alison trained as an Actor with Raymond Hawthorne in 1978. Since then Alison has worked on stage all over New Zealand, as well as on film and television. Her favourite stage roles have been Shirley in *Shirley Valentine*, Marquise de Merteui in *Les Liaisons Dangereuses* and *Aunt Daisy*. In 1984 Alison started working as a director at the Court Theatre in Christchurch.

Alison Quigan is now the Artistic Director of Centrepoint Theatre in Palmerston North, a position she has held since 1986. Centrepoint is the only professional theatre outside of Auckland, Wellington, Christchurch and Dunedin. At Centrepoint, programme highlights have included *Lovelock's Dream Run* by David Geary, *Joyful and Triumphant* by Robert Lord and most recently *Romeo and Juliet* by Shakespeare. In 1993 Centrepoint produced an all New Zealand programme. In 1992 Alison was invited to attend a Theatre Directors Workshop in London. This was attended by 25 directors from all over the globe. It was an excellent opportunity to see most of the productions on in London at that time and to meet and discuss ways of working with other directors.

Alison is also the Chairperson for NZAPPA (The New Zealand Association for Professional Performing Arts) and has been a member of the QEII Arts Council's Theatre Initiatives Panel and also the Theatre Infrastructure Panel.

Alison was born and bred in Palmerston North, is married to Bruce Graham (Theatre Designer), and they have two children Sarah and Freddie.

Tracy Grant *Costume & Set Designer*

Tracy began her career in 1981 as Stage Manager at Centrepoint Theatre in Palmerston North. In 1985 Tracy became resident designer at Mercury Theatre. In 1988 Tracy became head of design and associate director at Mercury Theatre and tutored at Carrington Design School and Auckland University.

While at Mercury, Tracy was responsible for designing grand opera such as *La Traviata*, *Don Giovanni* and *Turandot*. Musicals included *West Side Story*, *Peter Pan*, *South Pacific*. Theatre productions included *Romeo and Juliet*, *Hamlet* and *Camille*.

Since leaving Mercury in 1991 Tracy has become a successful freelance designer. Projects have included an exhibition at the Prague Quadrennial in Czechoslovakia, *The Flying Dutchman* - Auckland Opera, *My Fair Lady* - Aotea Centre, *Placido Domingo* at Western Springs, *Let's Do It* - Downstage Wellington, *Kiri at the Mission Concert* in Napier. In 1993, together with husband Iain Aitken (Set Designer) Tracy designed costumes for the dazzling Auckland Opera production of *The Magic Flute*.

In 1994 Tracy's horizons have extended to Australia where she is currently working on set and costume design for Victoria State Opera - *The Pearl Fishers*, and costume design for Sydney Theatre Company - *The Threepenny Opera* and Melbourne Theatre Company - *Hysteria*.



AUCKLAND THEATRE COMPANY & SMOKEFREE presents

By *Degrees*

BY ROGER HALL

ACT ONE

1987-1988

Interval 15 minutes

ACT TWO

1989-1991

By Degrees premiered at Fortune Theatre, Dunedin on 5 March 1993

CAST

(in alphabetical order)

Glenys Judie Douglass
Shirley Judith Gibson
Donna Rachel House
Clare Ilona Rodgers

Director Alison Quigan
Set/Costume Designer Tracy Grant
Lighting Design Donna Palmer
Audio/Visual John Donnan
Artistic Coordinator Simon Prast
Production Manager Teresa Sokolich
Props Teresa Sokolich
Wardrobe Elizabeth Whiting
Marketing/Publicity Diana Goulding Promotions
Stage Manager Pam Hindmarsh
Set Construction Third Stage
Production Assistants Kate Parker & Melanie Campbell

Theatre Foundation Trust Board Members

James Macaulay (Chairman)
 Timothy MacAvoy
 Judith Tizard MP
 David Stubbs
 Hinemoa Holmes
 Simon Prast LLB

Auckland Theatre Company

Artistic Coordinator, Simon Prast
 Production Manager, Teresa Sokolich
 Business Manager, Matthew Whiting



Ilona Rodgers *Clare*

Ilona Rodgers was born in England. While growing up she always dreamt of becoming a ballerina, but when she grew too tall, she left the Elmshurst Ballet School in favour of the Bristol Old Vic Drama School.

Ilona immersed herself in theatre work, including a two-year stint in the West End opposite Spike Milligan in *Son of the Oblomov*. Her television credits include such classics as *Dr Who*, *The Avengers* and *The Saint*. During a trip to New Zealand in 1973 Rodgers met her future husband, David and stayed in New Zealand. Since then Rodgers has been in demand for television, film and stage work.

Her New Zealand television credits include *Close to Home*, *Gliding On*, *Hunters Gold*, *Open House*, *Black Beauty*, *the Billy T. James Show*, *A Far Country* and just completed her third series as Charlotte Kincaid in *Marlin Bay III*.

In Australia there have been roles in major series, including *The Sullivans*, *Sons and Daughters*, *Prisoner* and *Sara Dane*.

Recent theatre roles include two one-woman shows - *Shirley Valentine* and *Kid's Stuff*.

Ilona played the glamorous magazine editor, Maxine Redfern, an award-winning role, in the dazzling soap *Gloss*.

Judie Douglass *Glenys*

Since shifting to Wellington in late 1991, from a South Island tour and 120 performances as Gen in *Conjugal Rites*, Judie has played Mum in the International Arts Festival hit *Joyful and Triumphant* and its Australasian tour, Ella in the film *Absent Without Leave*, Marion Savage in *Shortland Street* and Grandma Vile in *Bread and Roses*. Her professional career began in Christchurch in the mid 60s in radio plays and announcing with 3YC, then a 2-year stint as a daily reporter on the TV news programme *Town and Around*. Judie has played over 100 roles with the Court Theatre in Christchurch, as diverse as Elvira in *Blithe Spirit* to Goneril in *King Lear*. Winner of various stage awards and the Feltex Best Actress Award for her role as Sister Angela in *The God Boy*, Judie prefers to be known as a 'vintage actress' rather than a 'veteran actor'.



Judith Gibson *Shirley*

Judith has had over 12 years experience as a professional actor and director. Judith has played many lead roles from the classics to modern plays and musicals. Originally a leading Theatre Corporate actor and founding member, Judith has gone on to film and television work. Films include *User Friendly* and *Trial Run*, and television work includes *The Minders*, *Hanlon* and *Just Passing Thru*. The plays in which Judith has performed are too numerous to list. *By Degrees* marks her much awaited return to the stage. Recently Judith has had a break from performing to raise a child.



Rachel House *Donna*

Rachel graduated from Kamo High School, Whangarei in 1989. Then went on to study at the Auckland Performing Arts School and the prestigious New Zealand Drama School. Rachel graduated from the NZ Drama School in 1993.

"My training at New Zealand Drama School gave me ample opportunity to prove my versatility as an actor." said Rachel. "A good example of this would be my Monologue character, a battered and abused young Maori woman whose dream is to become the next Kiri Te Kanawa, as opposed to Bernada Alba the Iberian Matriarch who dominates and controls the lives of her five unwed daughters." Rachel has worked with Maidment Youth Theatre, Taki Rua, Central Theatre.

ELIZABETH WHITING Wardrobe

Elizabeth was Wardrobe Supervisor for Theatre Corporate and Mercury Theatre. Elizabeth is now a freelance designer and wardrobe supervisor with many outstanding productions to her credit. Most recently Elizabeth was wardrobe supervisor for Auckland Opera's *Magic Flute*, and the Harry M Miller production of *Jesus Christ Superstar*, Designer for television series *Homeward Bound* and Designer for Auckland Theatre Company's *Angels in America*.

DONNA PALMER Lighting Designer

Donna is a graduate of the prestigious NIDA (National Institute of Dramatic Art) in Sydney. Since graduating in 1985 Donna worked in Stage Management and Lighting Design for a diverse range of professional theatre companies in Australia including Sydney Theatre Company, Belvoir Street, Playbox, Anthill and Theatreworks. Since returning to New Zealand Donna has lit "*M. Butterfly*" and "*Blithe Spirit*" for Centrepoint Theatre, Palmerston North.

PAM HINDMARSH Stage Manager

Pam has been working as a Stage Manager for the past 8 years, mainly at Circa, Court and Mercury Theatres. In 1993 Pam was accepted for a 2-month-residency at Banff Centre for the Arts in Alberta, Canada. From there Pam worked in London, Manchester and Pitlochry, Scotland. Pam returned to New Zealand in 1994 and this year worked on Maidment Youth Theatre, *Angels in America* and *Titus Andronicus*.



UNIVERSITY OF AUCKLAND

Continuing Education

CENTRE FOR CONTINUING EDUCATION

INQUIRIES: CONTINUING EDUCATION, THE UNIVERSITY OF AUCKLAND
22 PRINCES STREET, PRIVATE BAG 92019, TEL 373-7599,
EXT 7831 OR 7443, FAX 373-7419.

MASONS
Clothing

179 Ponsonby Road Auckland
Tel/Fax: (09)376-0155

Très Marvelou

Très Elegante!

DOLCE & GABBANA BYBLOS KENZO MOSCHINO

**AUCKLAND
THEATRE
COMPANY**

ACKNOWLEDGEMENTS

The Auckland Theatre Company gratefully acknowledge the invaluable support of the following:

Canon

Ansett



Newstalk ZB
ENTERTAINING AND INFORMING AUCKLAND • 1030 AM • 1011 PM



Health Sponsorship Council - Smokefree

*Aotea
Centre*

Aotea Centre
BASS New Zealand

TVNZ

Television New Zealand

Radio New Zealand

Carmel Carroll

Newstalk ZB

Steven Zanoski

John King

N Z Herald

Audio/Visual: John Donnan, Aotea Centre

Set Construction: Graham Munford & Rob Peters of
Third Stage

Avio Mattiozzi - TVC

Tara Werner Publishing

Deborah Illingworth

Ellen Rawnsley

Continuing Education New Start Programme, Auckland University

Sunday Star Times

Roger Hall photo courtesy of NZ Listener

Greg Innes, Chief Executive Aotea Centre

Di Wilson, Programme Manager Aotea Centre

Tim Dowson, Production Manager Aotea Centre

Tania Fraser, Art-Education, Aotea Centre

John McDermott, Still photography

Nicholas Macaulay, Macaulay's Salon

Bruce Lahood, Ansett New Zealand

First Scene

John Verryt

Chris Miller

Court Theatre in Christchurch and Centrepoint Theatre in Palmerston North

Congratulations to ATC subscribers Mr & Mrs McDonald of Howick winners of the trip for two to Mana Island Fiji.

A group of typical Ansett supporters.



Name the sport, and you'll find a club.

Name the club, and you'll find a hard-working club secretary.

Name the club secretary and, more likely than not, you'll find an Ansett supporter.

That's because, at Ansett New Zealand, we've made it our job to support sports clubs and to make

group sports travel as hassle-free and as economical as possible.

Arranging the cheapest deals is part of our everyday work. Quite simply, if you haven't spoken to our team about your team's travel you will probably end up paying more than you have to.

If that's one of your responsibilities why not let us take the headaches

and financial pains out of your next trip.

For full details contact your nearest Ansett New Zealand office or phone our Group Travel Reservations Office toll-free on 0-9-309 1486, or your local bonded travel agent.

Ansett New Zealand.
Making the differences that matter.